



**109 Victoria Street TEMORA NSW**

3  2  1 

The elegance begins from the Victorian facade and flows effortlessly throughout this beautiful home. High ceilings with intricate roses and archways set the tone against stunning timber floorboards.

The formal living and dining areas are separated by floor to ceiling bi-folding timber doors, the living features a large bay window and both rooms have a beautifully detailed fireplace. The two main bedrooms are what you would expect from a home of this era, large and with high ceilings, one of which also features a fireplace. The central bathroom is a great space that compliments the style of the home.

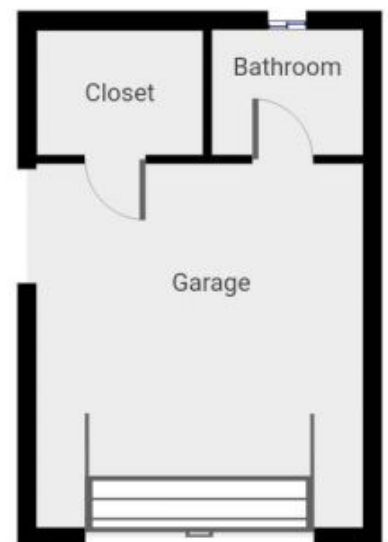
The open plan north facing kitchen/dining area is timeless with feature timber cabinetry and great natural light in the cooler months. Opening onto a beautiful outdoor BBQ area

**Type** : Semi Detached  
**Price** : \$ 461,000  
**Land Size** : 506 sqm  
**View** : <https://www.qplrural.com.au/sale/nsw/riverina/temora/residential/semi-detached/7242241>



**Lachlan Pellow**  
**0269781008**

[For full version visit the website](https://www.qplrural.com.au)



THIS FLOORPLAN IS PROVIDED WITHOUT WARRANTY OF ANY KIND. SENSOPIA DISCLAIMS ANY WARRANTY INCLUDING, WITHOUT LIMITATION, SATISFACTORY QUALITY OR ACCURACY OF DIMENSIONS.