



12 Kiesling Drive NARRANDERA NSW

4  2  3 

Located in the peaceful Kiesling Drive this home encapsulates everything family living.

Consisting of four bedrooms - the master with walk in robe and ensuite with spacious corner spa bath. The remaining three bedrooms are carpeted with ceiling fans and built in wardrobes.

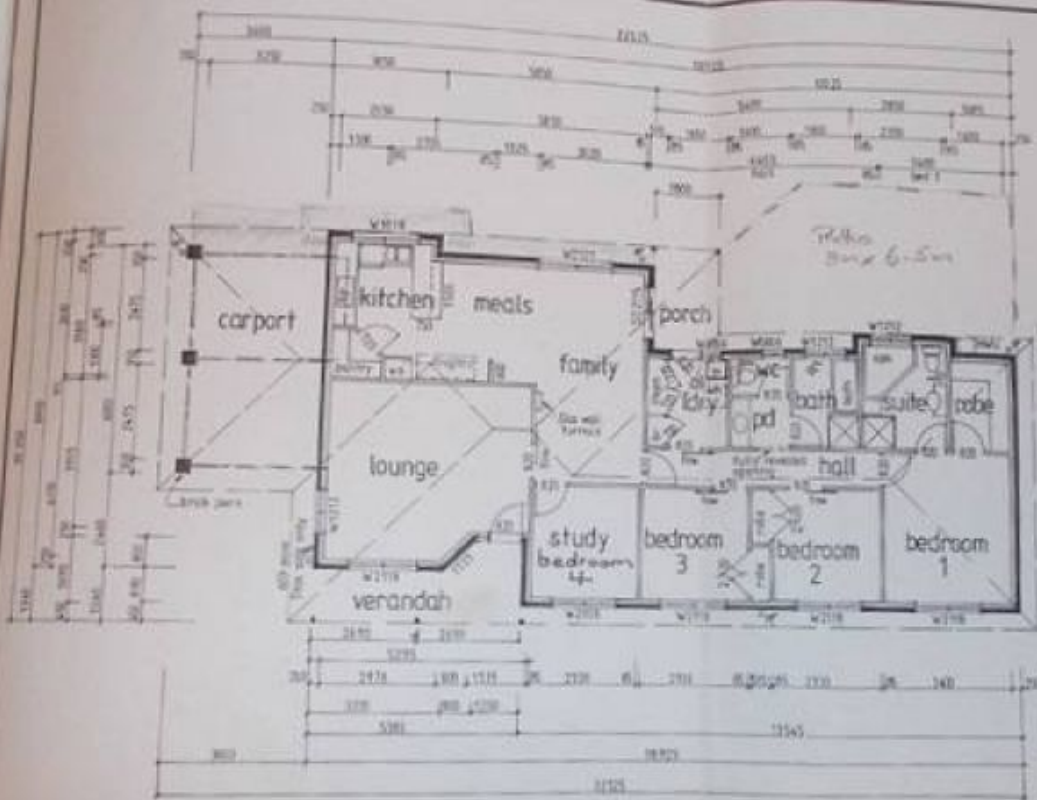
The living area has new carpet and paint and has large windows allowing plenty of natural light. The neutral kitchen offers gas cooktop and stove, walk in pantry, dishwasher and breakfast bar. The dining room is adjacent and comfortably accommodates a eight piece dining set. Heating and cooling is provided by gas heating and ducted air conditioning.

Type : House
Land Size : 1033 sqm
View : <https://www.qplrural.com.au/lease/nsw/riverina/narrandera/residential/house/7243019>



Sandra Mathieson

[For full version visit the website](https://www.qplrural.com.au)



- GENERAL NOTES**
1. Structural steelwork to be erected and bolted in accordance with AS 4100.
 2. Masonry to be erected in accordance with AS 2312.
 3. All masonry to be finished with a minimum of 100mm concrete cover to reinforcement.
 4. All masonry to be finished with a minimum of 100mm concrete cover to reinforcement.
 5. All masonry to be finished with a minimum of 100mm concrete cover to reinforcement.
 6. All masonry to be finished with a minimum of 100mm concrete cover to reinforcement.
 7. All masonry to be finished with a minimum of 100mm concrete cover to reinforcement.
 8. All masonry to be finished with a minimum of 100mm concrete cover to reinforcement.
 9. All masonry to be finished with a minimum of 100mm concrete cover to reinforcement.
 10. All masonry to be finished with a minimum of 100mm concrete cover to reinforcement.

FLOOR PLAN LAYOUT

© Copyright
 Reproduction in whole or part without
 written permission will constitute a
 breach of copyright and will render all
 articles liable to legal proceedings.

Approved architect
M. FIVE CLARK
 Lot 17 KESLING DRIVE,
 NARRANDERA

Home Design
 "Special"



12/17/18
 12/17/18
 12/17/18
 12/17/18

- General Notes:**
- 1. Obsolete window glass to bathroom, in-suite & w.c.
 - 2. Safety glass to bathroom & in-suite windows.
 - 3. 1200mm nominal overall width to entry door frame/casings.
 - 4. Radiant steel - max 70 litre trough with 4y-pipe.
 - 5. Gas hot water and 130 litre.
 - 6. Concrete paving to carport, verandah & porch.
 - 7. Meter box position to be verified.

Also
 9m x 6m
 General Shed
 3m x 3m
 Garden Shed

Area	Area	Area	Area
A	2483	1000	1.100
B			
C			
D			
E			
F			
G			
H			
I			
J			
K			
L			
M			
N			
O			
P			
Q			
R			
S			
T			
U			
V			
W			
X			
Y			
Z			

152.08m² 9.12m² 27.95m² 5.0m²