

26 Frederica Street NARRANDERA NSW

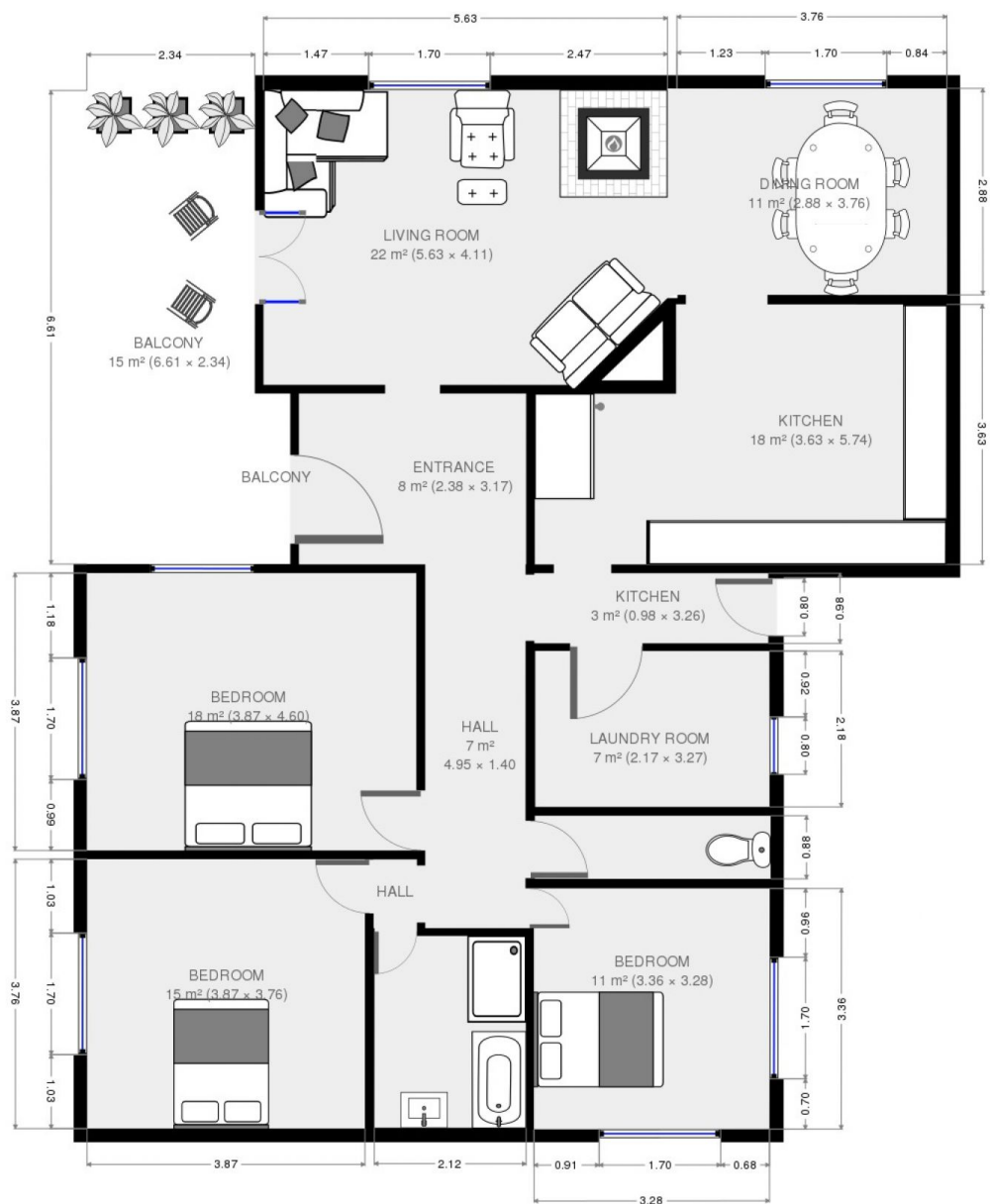
3  1  1 

Located on the corner of popular Frederica and Melbourne Street is this three bedroom home. Offering three generously sized carpeted bedrooms with new blinds, large windows allowing plenty of natural light and has been freshly painted. Spacious carpeted open plan living and dining area with large windows, split system unit plus a slow combustion wood fire - perfect for those cooler winter months! The kitchen is neutral and has recently been freshly painted with lino floor coverings, new electric oven. The bathroom has a shower, single vanity and bath plus separate room with toilet. Externally the home features a carport with roller door, undercover entertaining area, additional sitting area, ramp access to outside, large backyard plus additional garden shed.

Type : House
Land Size : 1005 sqm
View : <https://www.qplrural.com.au/lease/nsw/riverina/narrandera/residential/house/7243368>



Sandra Mathieson



THIS FLOORPLAN IS PROVIDED WITHOUT WARRANTY OF ANY KIND. SENSOPRIA DISCLAIMS ANY WARRANTY INCLUDING, WITHOUT LIMITATION, SATISFACTORY QUALITY OR ACCURACY OF DIMENSIONS.