



NARRANDERA

4  1  2 

Located in the peaceful Larmer Street this charming home features a spacious wrap around verandah, polished floor boards, fretwork and picture rails. Consisting of four carpeted bedrooms - two of which have access onto the wrap around verandah. There is a spacious combined living, dining and kitchen area. The large neutral kitchen features a gas cook top and oven. The spacious living area allows plenty of natural light with access outside. The dining area adjacent has double french doors leading outside. The bathroom features a vanity, toilet plus shower over bath. Ducted air conditioning through out the home plus a wood fire located open plan living, kitchen and dining area. Externally the home features a paved entertaining area shaded by a shade cloth. There is a garden shed with laundry located inside. A single car carport with electric

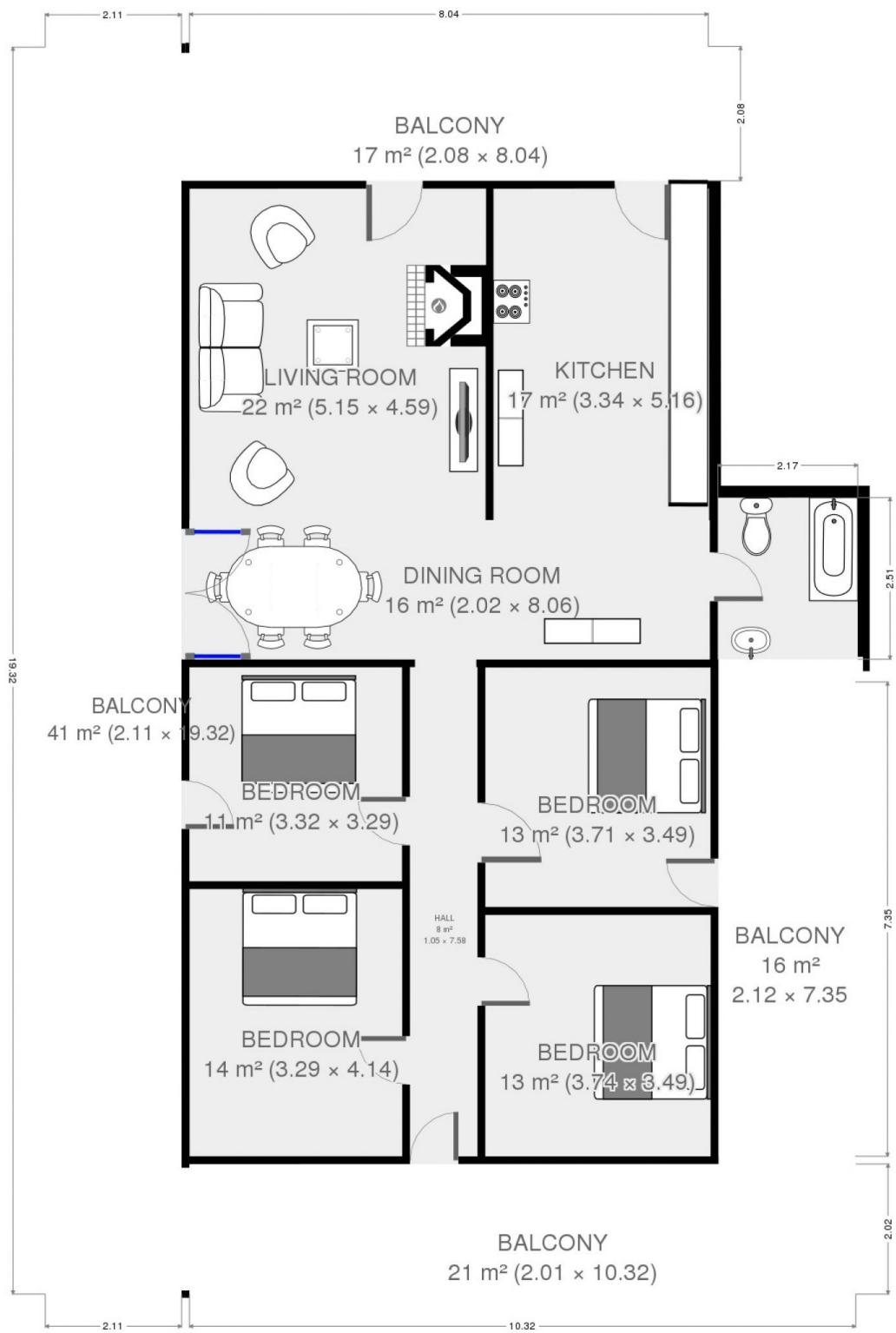
Type : House
Land Size : 626 sqm
View : <https://www.qplrural.com.au/lease/nsw/riverina/narrandera/residential/house/7243381>



Sandra Mathieson

[For full version visit the website](https://www.qplrural.com.au)

Ground Floor



THIS FLOORPLAN IS PROVIDED WITHOUT WARRANTY OF ANY KIND. SENSOFIA DISCLAIMS ANY WARRANTY INCLUDING, WITHOUT LIMITATION, SATISFACTORY QUALITY OR ACCURACY OF DIMENSIONS.