



NARRANDERA

4  1  2 

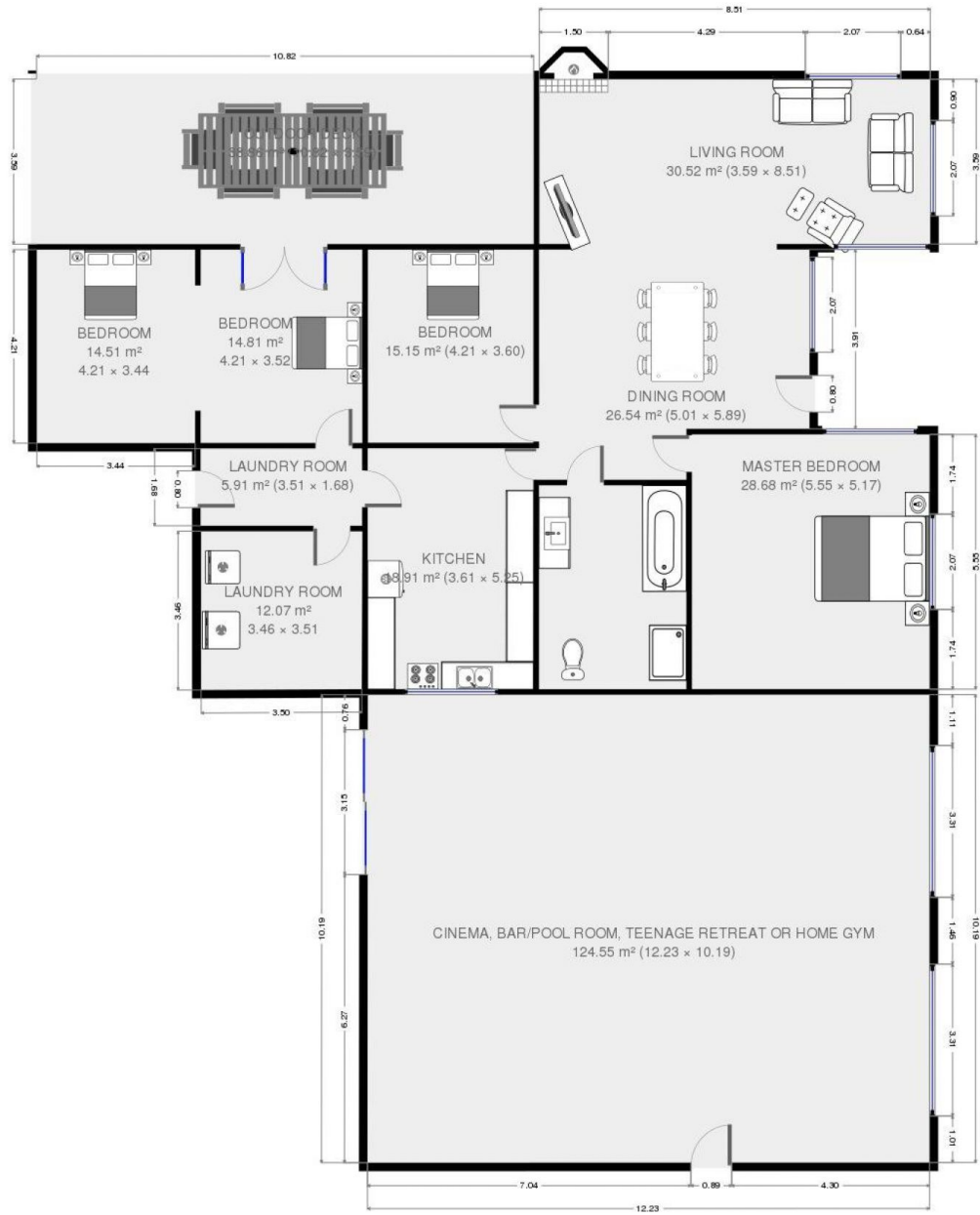
This very large four bedroom, one bathroom, two living areas family home. With four good sized bedrooms, three with built-in wardrobes. As you enter the home you are greeted with beautiful floating timber flooring flowing through the open plan living room and dining room. The Kitchen features Lino tile flooring, timber cupboards and electric oven, grill and cook-top. The kitchen has a window overlooking the extremely large room off the side of the home this room could be used for anything from a kids play room, media room, bar/pool room, teenage retreat or home gym. The Bathroom features a shower, bath, vanity and toilet. Heating and cooling to this home is via a timber fireplace in the living area and wall mounted air conditioning units. This home also features a large amount of shedding including single garage, double carport and

Type : House
Land Size : 1293 sqm
View : <https://www.qplrural.com.au/lease/nsw/riverina/narrandera/residential/house/7243384>



Sandra Mathieson

[For full version visit the website](https://www.qplrural.com.au)



THIS FLOORPLAN IS PROVIDED WITHOUT WARRANTY OF ANY KIND. SENSOPIA DISCLAIMS ANY WARRANTY INCLUDING, WITHOUT LIMITATION, SATISFACTORY QUALITY OR ACCURACY OF DIMENSIONS.