

NARRANDERA

4  2  1 

This charming cottage style property is bigger than it looks! Consisting of four bedrooms, two bathrooms and separate dining plus wooden floor boards throughout. Three bedrooms have built in wardrobes with the forth having plenty of room for cupboards. The master bedroom has french doors leading onto a sleep out with access to the front verandah. The lounge has a built in study nook plus bay window looking out to the tree lined street. Large open kitchen with lino floor coverings, breakfast bar, walk-in pantry and plenty of cupboard space. Separate dining adjacent to the kitchen with a wood fire. The main bathroom consists of a shower over bath, toilet and basin. There is a second bathroom combined with the laundry with a shower, single basin plus additional toilet. Heating and cooling is provided by ducted air-conditioning, ducted heating plus additional wood fire located in the dining room.

Externally there is a covered entertaining area, single

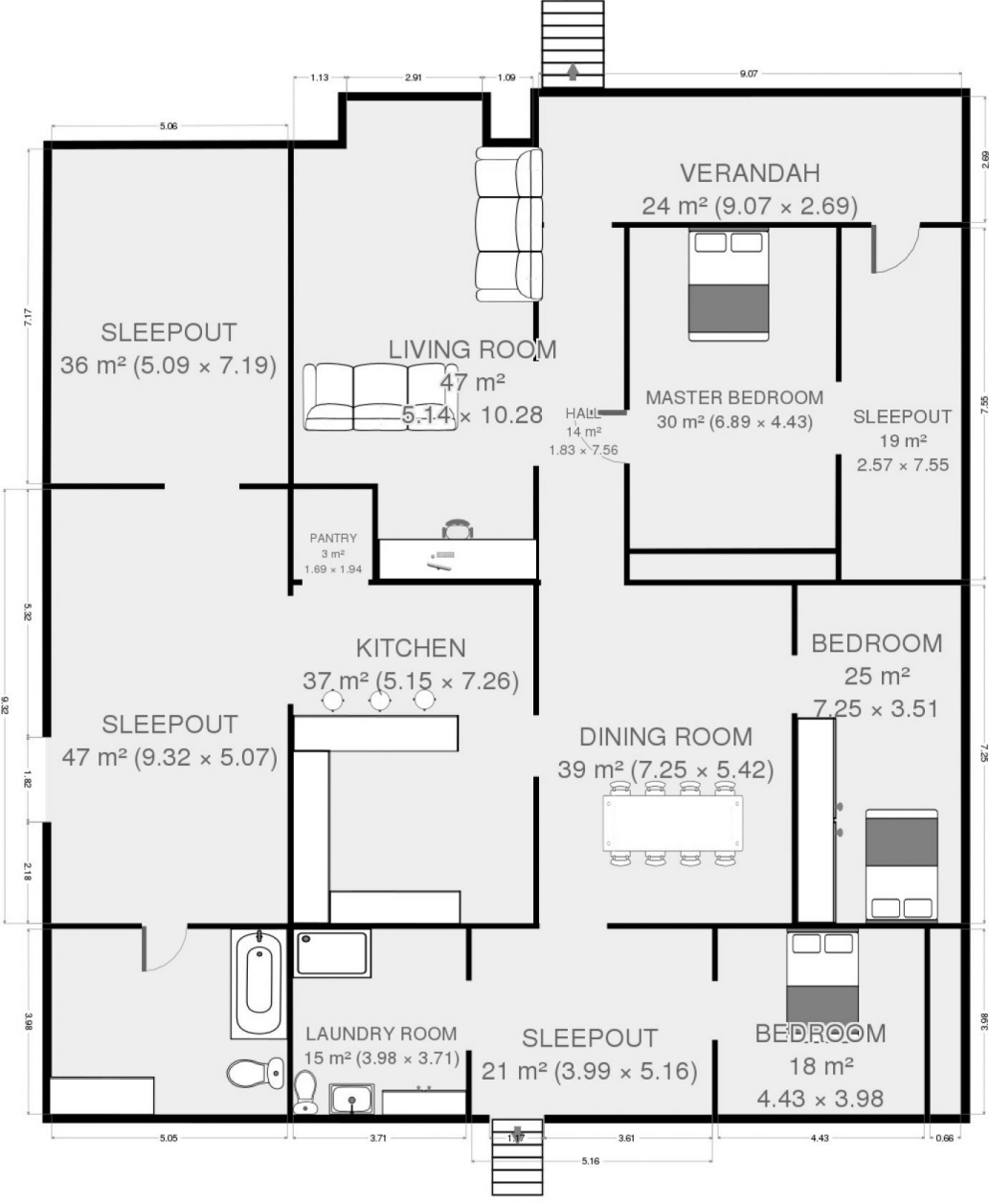
Land Size : 828 sqm

View : <https://www.qplrural.com.au/lease/nsw/riverina/narrandera/residential/house/7243395>



Sandra Mathieson

Ground Floor



THIS FLOORPLAN IS PROVIDED WITHOUT WARRANTY OF ANY KIND. SENSOPRIA DISCLAIMS ANY WARRANTY INCLUDING, WITHOUT LIMITATION, SATISFACTORY QUALITY OR ACCURACY OF DIMENSIONS.