



110 Victoria Street TEMORA NSW

3  2  1 

Situated on a manageable parcel of 250sqm, this contemporary duplex offers comfortable living in a convenient location.

This home has three good-sized bedrooms, generous living space and a low-maintenance yard.

This property would be perfect for a first home buyer, downsizer or investor.

Internal features:

3 good-sized bedrooms

Open plan kitchen, living & dining area.

Ceiling fans in the bedrooms.

The main bedroom features an ensuite and walk-in wardrobe.

Ducted reverse cycle air-conditioning.

[For full version visit the website](https://www.qplrural.com.au)

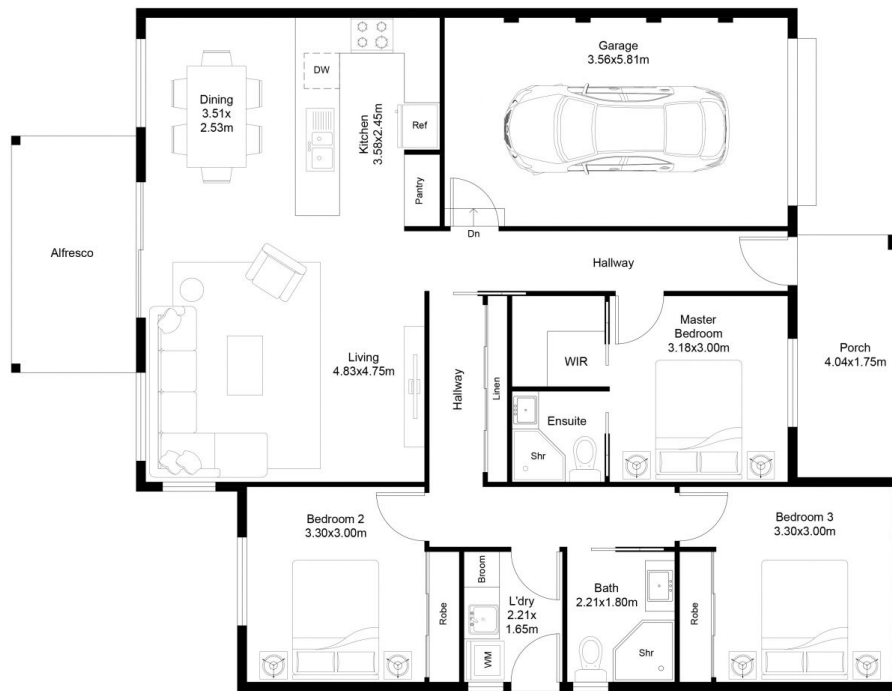
Type : Semi Detached
Price : \$ 330,000
Land Size : 250 sqm
View : <https://www.qplrural.com.au/sale/nsw/riverina/temora/residential/semi-detached/7243814>



Lachlan Pellow
 0269781008



Jessica Afflick
 0419 436 904



FLOOR PLAN

110 Victoria Street, Temora NSW 2666