






### 340 Carbone Road LEETON NSW

4  2  8 

This lovely four-bedroom home on a substantial block is the perfect home for the family looking to upsize to a house with a bit more freedom and plenty of space.

With a beautifully updated kitchen with a built-in dishwasher oven, electric cooktop, and plenty of storage, off the kitchen is the spacious dining area with a roomy living area down the hall

Located on Carbone road just a ten minute drive from the Leeton CBD is perfect for those looking to get some peace and quiet that comes with such a substantial block but still be able to go in town for their essential needs.

Externally the house includes a bright and welcoming

[For full version visit the website](https://www.qplrural.com.au)

**Type** : Acreage/Semi-Rural  
**Price** : Sold Off Market  
**Land Size** : 4.1 ha  
**View** : <https://www.qplrural.com.au/sale/nsw/riverina/leeton/residential/acreagesemirural/7299786>

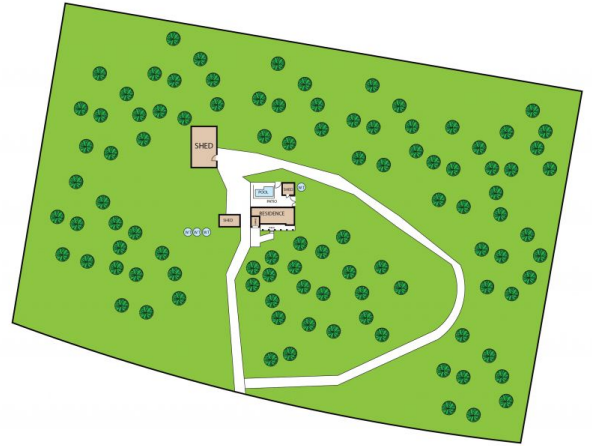
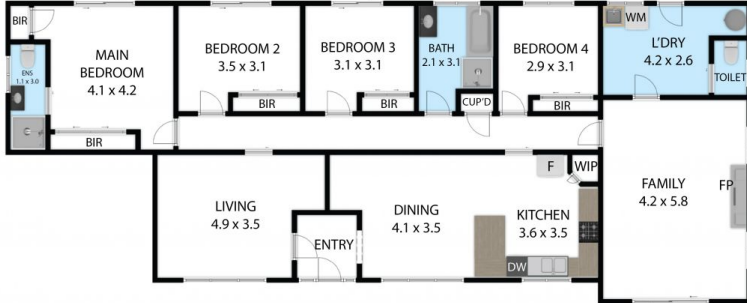


**Craig Tyrrell**  
0269781008



**Andrew Pellow**  
0269781008

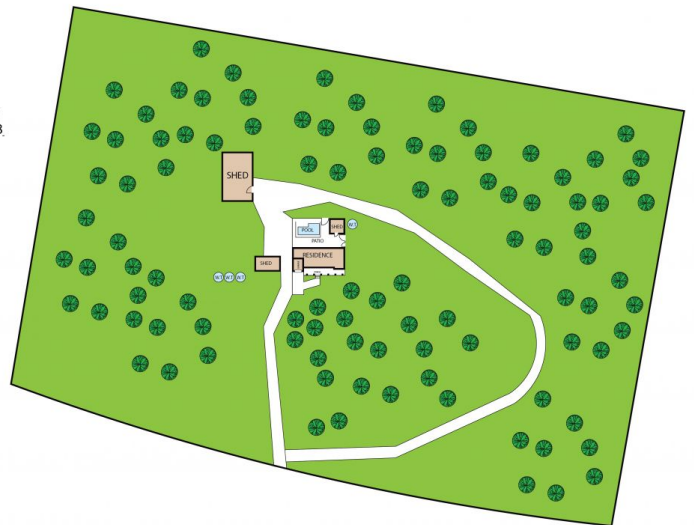




340 Carbone Road, Corbie Hill 2705

TOTAL APPROX. FLOOR AREA 155 SQ.M

Whilst every attempt has been made to ensure the accuracy of the floor plan contained here, measurements of doors, windows, rooms and any other items are approximate and no responsibility is taken for any error, omission, or misstatement. This plan is for illustrative purposes only and should be used as such by any prospective purchaser.



340 Carbone Road, Corbie Hill 2705

TOTAL APPROX. FLOOR AREA 155 SQ.M

Whilst every attempt has been made to ensure the accuracy of the floor plan contained here, measurements of doors, windows, rooms and any other items are approximate and no responsibility is taken for any error, omission, or misstatement. This plan is for illustrative purposes only and should be used as such by any prospective purchaser.